



Gulf Falcon
Contracting Co. W.L.L.

Pre-Qualification



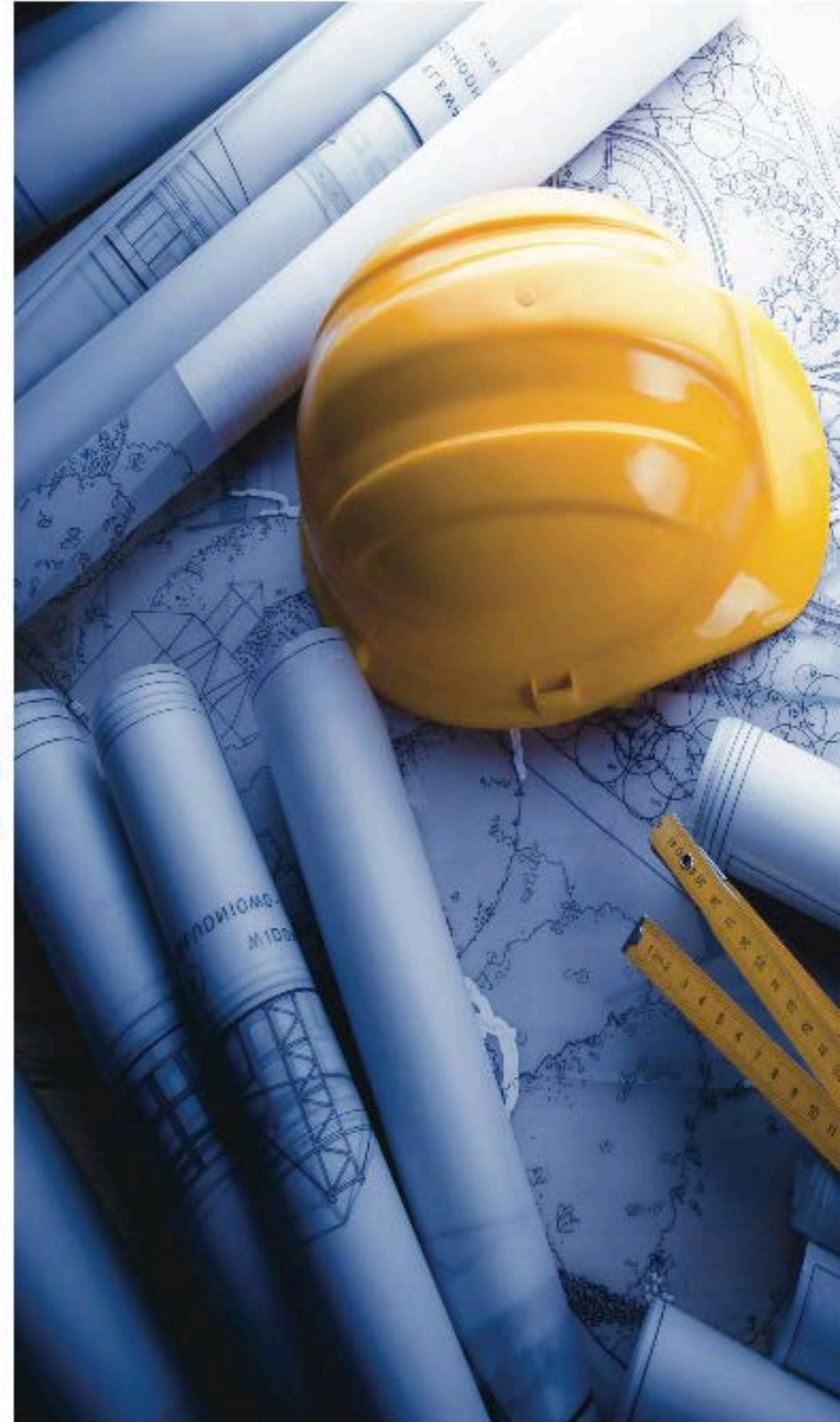
**CORPORATE
PROFILE**

1 Introduction:

Gulf Falcon is an establishment that focuses on providing quality services and sustainable projects to its clients. GFC started Since 2009 as Main contractor, Gulf Falcon is all that you need to deliver your complete building from A to Z. We build your building from foundation to roof and everything in between.

Over a short period of time, GFC transcended to become one of the leaders in building various projects such as commercial and housing complexes, infrastructure, and has been instrumental in the industrial expansion of Qatar. GFC has also developed a wide range of professional specialties that became separate entities and support organization at different areas of the industry.

GFC's great strength lies in the capability of delivering projects on time with the required quality of work, experience, qualified staff of engineers and good craftsmanship. GFC continues to be recognized as a leader in its profession, demonstrated by its vast range of services.



2 Core Values:



2.1 Quality

We take quality very seriously and train our staff and workers to insert quality in everything that we do. Quality has become a routine in our business as it is integrated in everything that we do. Outstanding results and meeting our client's expectations is our minimum standard.

2.2 Safety

A safe working environment is our commitment to our clients, staff and workers, whether at the office, the project site or at our warehouse. Safety is integrated in everything that we do.

2.3 Integrity

We are there to provide our clients with services the way we contract it to be done. Integrity coupled with truthfulness and honesty governs our relationship with our clients. Our objective is to build a long lasting relationship based on trust and respect with all of our clients.

2.4 Innovation

The latest in technology is always utilized by our company in order to deliver the best possible product. We aim to have a positive impact on our clients and the community that we serve.

2.5 Flexibility

Clients may change their requirements from time to time due to a new business need or to meet a certain regulatory authority stature. We are flexible to meet such requirements with little or no impact on the schedule, and we endeavor to keep the impact on the budget very minimal.

2.6 Environmental Responsibility

Every effort is made to promote, and implement the use of environmentally friendly materials and the use of sustainable practices that help preserve the good of our environment.

2.7 Community

supporting the community that we work in is one that we seek to be very active in, providing coop and employment opportunities to local graduates and promoting the use of locally available materials.



3 What We Do:

We aim to be one of the leading building contractors in the state of Qatar.

- Building Construction, we carryout construction for all types of buildings, whether the end product is one single building or a group of buildings, being a Hotel, an office Building, a hospital, a retail mall, to palaces and villas compounds. Serving the private and public sectors.
- Construction Turnkey Project.
- Interior and Fitout Work.
- Agriculture & Irrigation Services.

4 How it's done:

Providing construction innovative solutions while maintaining quality, and ensuring that the clients' baselines are always delivered on time.

In addition to its highly professional expertise that GFC retains and continues to look for and hire, GFC's own partners are fully active in their roles and run the day to day business, managing the ongoing projects in a program spirit where strategy aims to deliver quality product, that is sustainable to the quality sought and within the specified time frame and budget.

Throughout the entire process, the client is constantly informed and updated with all that is relevant to his own project.

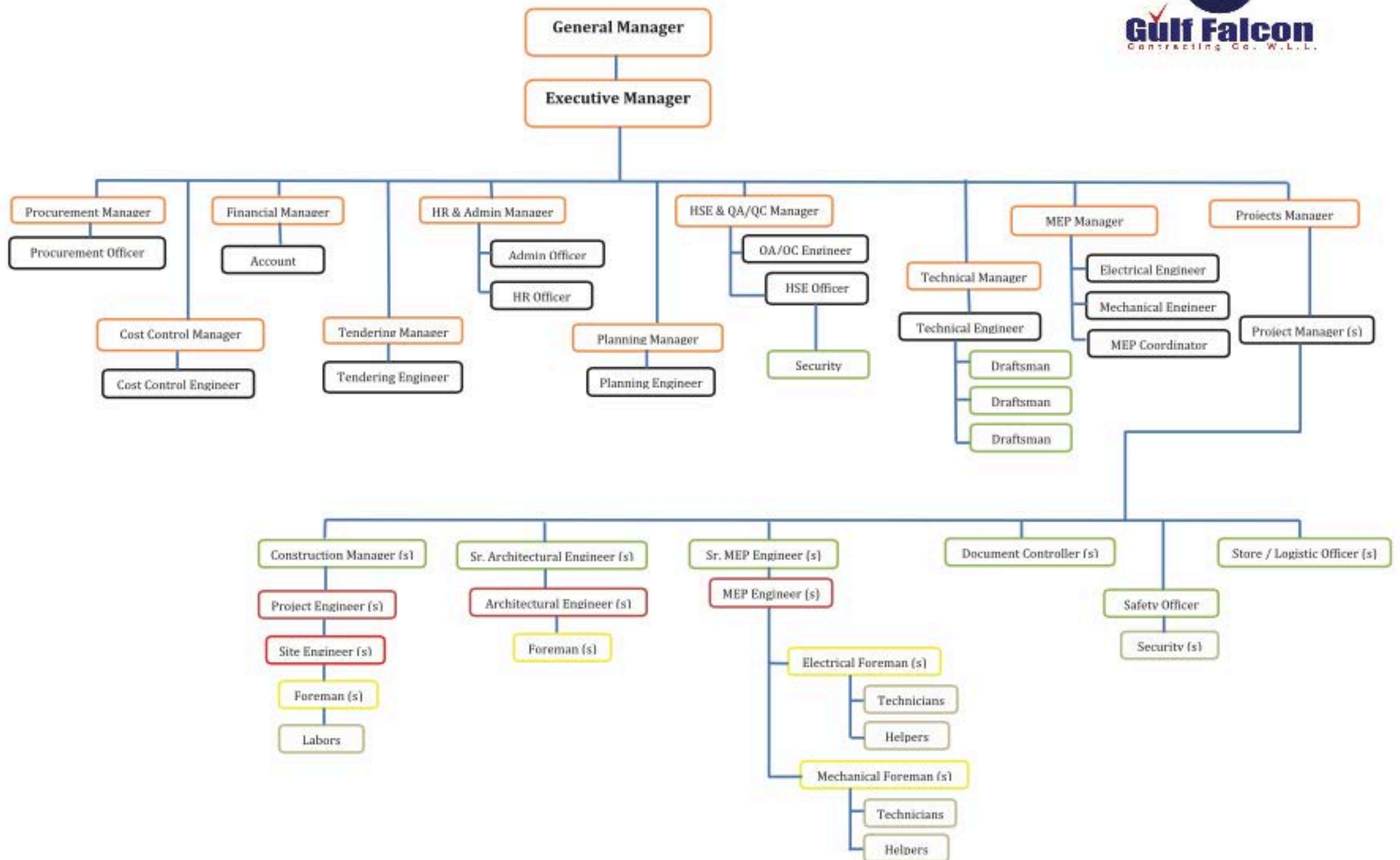
Our managing partners, while working for others, delivered some of the most prestigious projects in the state of Qatar, such as the Ritz Carlton Hotel, the Four Seasons Complex, the Museum of Islamic Art, Barwa Al Sadd Complex and many others. All this expertise and professionalism is being put at the fingertips of our clients in order to deliver their investments with the quality and within time and budget, hence realizing their dream.

Whether big or small, the project is dealt with from the planning stage; we plan our project well, we produce a project management plan and follow it all the way through into Execution, monitoring and control and closing out stages. Hence integrating all the processes until successful completion, all works are verified and approved by our QA/QC team before they reach the clients acceptance stage.



5 Organizational Structure and Our Key Staff

GULF FALCON COMPANY ORGANIZATION



6 External Logistics

Due to the nature of our business and due to the types of contracts that we are willing to enter in, we always knew that we need to partner with others in order to make it happen; this is why we have elected to introduce our motto " Achieve through Positive Partnership" From the inception we knew that growing and having a decent market share requires partnering and teaming up with other experts in the construction industry, therefore we have approached specialty expertise companies and partnered with them through MoUs, whereby they will share their experience, logistics and knowledge with us. This is done at the Construction level and at the Project Management level as well, which includes Design consultants, Specialty Construction companies and Project Management companies.

7 Insurances

Gulf Falcon Contracting carries out the following types of Insurances on a project by project basis:

- Workers Compensation;
- Third Party Liability;
- Builders Risk;
- Professional Indemnity, (When Applicable); and
- Others When applicable, such as:
 - ★ Pollution Risk; and
 - ★ Contractual Liability.



Although, we usually have a blanket cover for all of our projects, we also require all of our subcontractors to have their own insurance as well.

8 Company Expertise

Gulf Falcon Contracting Company, W.L.L. is committed to deliver the following services to a diversified client's base while committing to high quality and timely delivery with integrity and dedication:

8.1 Turn Key Construction Solutions:

8.1.1 Whether fully designed, partly designed or not designed at all, Gulf Falcon Contracting will take charge and deliver the project in a timely manner with the quality sought and with the agreed estimates.

8.1.2 Design Build: Gulf Falcon Contracting Co., has collaboration relationships with many local and International consultants, where we are able to start any project from scratch, providing the concept design, Schematic Design and the Detailed Design until issue for construction drawings including the acquisition of the Building Permit and deliver the entire construction from A to Z; (as they say until the Key).

8.1.3 EPIC: For those types of projects that require more attention to detail, Gulf Falcon Contracting Company will carry out works as per EPIC Contract, where we will Engineer, Procure, Install and Commission. During this scheme we will take the lead in training all of the end users staff on the operation and maintenance of the facility. During this process all that we ask the client to do, is sit and watch and we will do the entire job.

8.1.4 We also provide a full landscape and irrigation services, including design, maintenance, construction and irrigation.

9 Project Management and Controls:

Gulf Falcon's Contracting Company prides itself of its team that has solid Project Management & Controls background. Our team of Project Management and Project Controls professionals provides integrated support to the projects through all processes, starting from initiating a project, going into planning, Executing, monitoring and control until closure. Throughout the entire project cycle, our team reiterates back and forth in order to properly manage all risks involved and mitigate them through elimination or minimizing their impacts on both the Schedule and the Cost. Our Promise to our Clients is the lowest possible fees in the market, with the maximum possible return to them.

- Feasibility Study and Production of the necessary business case;
- Preparation of Project Charter;
- Preparation of Project Management Plan (Execution Plan);
- Budget Preparation and Verification;
- Project Health Check and Diagnosis;
- Schedule Analysis;
- Cost Analysis;
- Forecasts.
- Claims Review and Recommendations Reporting;
- Third Party Project Management Audits, Findings and Recommendations Reporting;
- Client's Representation;
- Project Closeout Management.

Construction Management Services:

- **Tender Administration Process;**
- **Contractors Prequalification;**
- **Construction Packaging Strategy and Implementation;**
- **Tender Preparation;**
- **Tender Review, Evaluation and Recommendation Reporting;**
- **Tender Negotiation and award.**
- **Construction Review and Recommendations;**
- **Management of Supervision consultants throughout the entire Monitoring and Control and Closing process;**
- **Management of contractors throughout the entire Monitoring and Control and the Closing Process;**
- **Schedule and Cost Control.**
- **Contract Management and Administration.**
- **Risk Management.**

Landscaping Services:

We also provide a one stop for all areas of landscaping services including design, maintenance, construction and irrigation for residential and commercial clients.

Testing & commissioning until successful project closure.

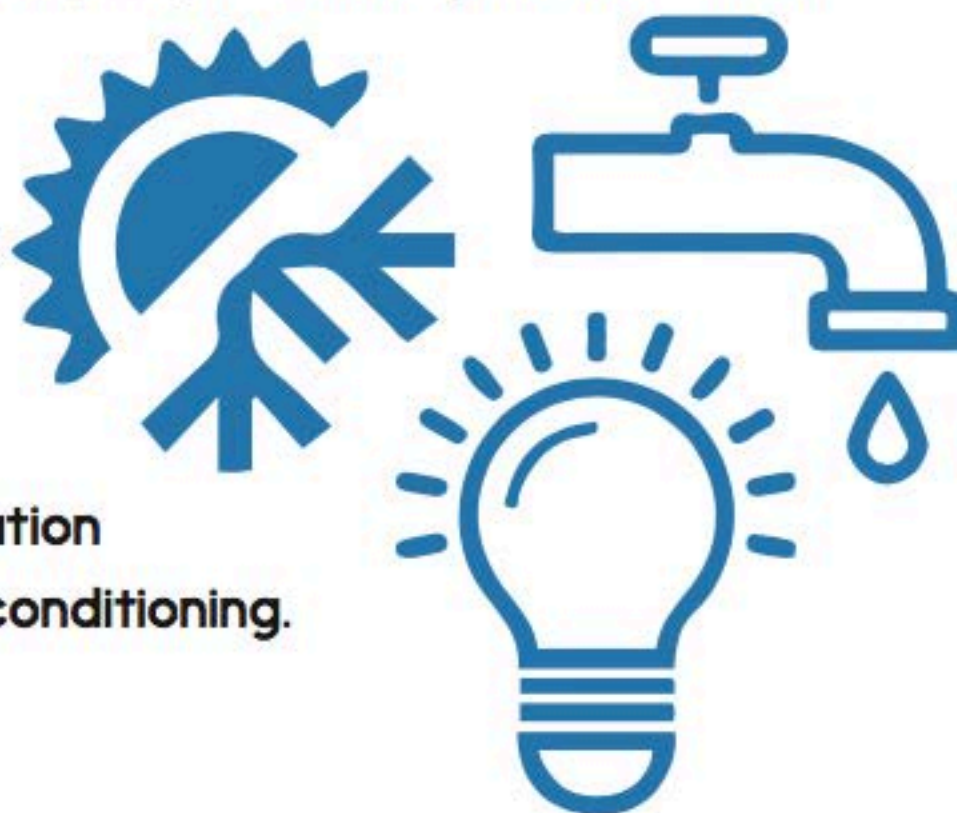
Operating and Maintenance.

10 Mechanical, Electrical and Plumbing (MEP):

One of Gulf Falcon Contracting key strengths, is sister company Gulf Falcon Electro-Company, who will be there to build and manage the construction of any type or size project in order to achieve our commitments with our clients. We believe that MEP is the heart and soul of any building or a project and it should start hand in hand with the first nail in the ground, having such services within our direct reach gives us an edge to be able to deliver and stay aligned throughout the entire project's life cycle.

10.1 Mechanical:

Industrial and process pipe work, pipe gantry's and support systems, plant and machinery installations, ventilation and air treatment, heating and hot water, automation and control systems, refrigeration and air conditioning.



10.2 Electrical:

Generating plants, power distribution systems 415v, 11kv, 33kv, industrial and process services, lightning and power, fire detection and alarms, programmable logic control systems, instrumentation, control and automation, security systems and data cabling.

10.3 Plumbing:

Water supply, drainage, fire protection, gas industrial and process services, plumbing and sanitation, rainwater, sewage treatment and waste water treatment, water

11.2 Health and Safety

We at Gulf Falcon Contracting Company recognize that high standards of Health and Safety are an integral part of efficient business management objectives and contribute to the operational efficiency and wellbeing of the company. For such standards to be achieved adequate financial and physical resources are made available, thereby ensuring continuing development of our employees and the provision of the necessary expert advice, all new employees are inducted through a safety induction program, while site employees go through periodic safety tool box talk meetings.

The Executive management at Gulf Falcon Construction Company regards Health and Safety as one of the three pillars of the company which are:

- Health and Safety;
- Quality; and
- Productivity.

Line managers pursue progressive improvements in health and safety performance by establishing and maintaining control, communicating the necessary information, encouraging co-operation between individuals and groups thereby ensuring that a positive health & safety culture is promoted and developed. Equally, it is recognized that employees have a duty of care to themselves, and others by avoiding hazards, preventing accidents and co-operating with the Company by complying with all instructions and recommendations on health and safety directives.

11.3 Gulf Falcon Company insures that:

- Safe and health work methods and conditions are adopted and provided.
- All statutory requirements are observed and are treated as the minimum standards to be applied to all work activities.
- Employees are made aware of potential hazards and the precautions to be adopted, by providing information, instruction training and supervision.
- Steps are taken to identify the immediate and underlying cause of work related injuries and implement any preventive action necessary.
- This policy is reviewed and developed periodically to ensure its remains effective and any necessary amendments are communicated to all employees.
- Employees who willfully disregard Company health & safety policies and procedures will be subject to summary dismissal.

11.3 Environment:

- Gulf Falcon Contracting Company stresses that every individual in the company has a moral responsibility to protect its environment that is within his/her control.
- Gulf Falcon Contracting Company complies with all relevant legislation governing waste disposal, toxic emissions, conservations and pollutions.
- We employ practices, which reduce the impact of pollution and environmental disruption through all our business activities, whilst striving to improve the efficient use of what is within our reach.
- Our projectized HSE Management Plan will provide sufficient detail concerning HSE policy.

12.0 Quality Statement

Gulf Falcon Contracting Company realizes that Quality is essential in everything that we do. Quality is doing things right the first time, therefore, quality is not fixed and is not the same for every project that we do, Quality is a measure of what is required of us to do based on an identified scope of work that we contract to do for our clients. We adhere to the scope and to the acceptance criteria that has been defined in our scope of works.

12.1 Commitment:

- Gulf Falcon construction Company W.L.L. is committed to deliver all of their contacted works with the highest quality required at all times.
- We realize that in order to be profitable and well reputed company, we must do the job right the first time, as such timely deliver to our clients and highest possible profit will be insured.
- We realize that Quality must be an integral part of scope and cost, therefore keeping the three constraints aligned.
- Satisfying our Clients and End Users by delivering a product that is in line with its intended use.
- Therefore:
- The first activity for any part of the project shall start by putting a well-defined method statement of work, that shall be reviewed and approved in house before it is submitted to the Client's Engineer for final approval;
- Retaining of our expertise who know how to do it right;

- Provide sufficient supervision on all ongoing works and have it verified and accepted in house before it is offered to the Client's Engineer for verification and acceptance;
- Continuously improving our processes;
- Plan quality well based on the scope requirements, perform quality assurance at the Execution process and perform quality control and quality audits at the Monitoring and Control process.
- To maintain a staff able to interpret, clarify and conform to the clients requirements.
- To ensure, by proper selection and examination that goods supplied and/ or incorporated are suitable and safe to operate.
- To make sure that goods and systems are installed in a satisfactory manner.
- o commission completed systems so that their operation and maintenance is facilitated.
- If so required by the Client, to ensure that the completed and commissioned system are serviced on a regular and systematic basis.
- o plan, control and document, in a systematic manner, those procedures necessary to provide the specified level of Quality assurance.
- To maintain such records as will substantiate the quality Assurance applied throughout each project undertaken.
- To provide evidence of quality by demonstration and certification where required.
- Our projectized QA/QC Management Plan will provide sufficient detail concerning Quality policy.

13.0 Summary of On Going & Completed Projects

SI	PROJECT NAME	CLIENT	SCOPE OF WORK
01	Fox Hills Residential Building 2B+G+M+6 MU E08	Ali Bin Khalifa Al Hitmi & Partners	Turnkey Project
02	Fox Hills Residential Building B+G+4 RES D17	Khalifa bin Ali Alhitmi	Turnkey Project
03	Fox Hills Residential Building B+G+4 RES A37	Ali Bin Khalifa Al Hitmi & Partners	Turnkey Project
04	Sheikh Khalid Bin Abdullah Palace	Sheikh Khalid Bin Abdullah AL Thani	Turnkey Project
05	Edison Academy -Aspire	Edison Academy	Turnkey Project
06	Al Hitmi Residential Building	Hitmi Property Development	Turnkey Project
07	Extension at La Cigale hotel	Arabian Construction	MEP Work
08	Four Season Nusantao Restaurant	Four Season Hotel	MEP Work
09	Four Season Nusantao Restaurant	Advanced Tourism Investment co.	MEP Work
10	Al Kaabi Villa	Kebcoo	Turnkey Project
11	Al Hitmi Office Tower at the Corniche	Hitmi Property Development	Civil & Fitout Work
12	Fraser Suites Hotel	Hitmi Property Development	Civil & Fitout Work
13	Al Fida G+5 Commercial Building	Sheikh Ahmed Bin Mohammed Al Thani	Civil Works
14	Al Muraihk Villa; Eng. MSDIAB	Private Hospitality Co.	Turnkey Project
15	OOREDOO Head Quarter Tower	OOREDOO - Qtel	Fitout Work

13.1 On Going Projects:

Project : Fox Hills Residential Building 2B+G+M+6 MU E08
Status : Ongoing
Client / Contractor : Ali Bin Khalifa Al Hitmi & Partners
Location : Lusail



13.1 On Going Projects:

Project : Fox Hills Residential Building B+G+4 RES A37
Status : Ongoing
Client / Contractor : Ali Bin Khalifa Al Hitmi & Partners
Location : Lusail



Project :

Fox Hills Residential Building B+G+4 RES A37



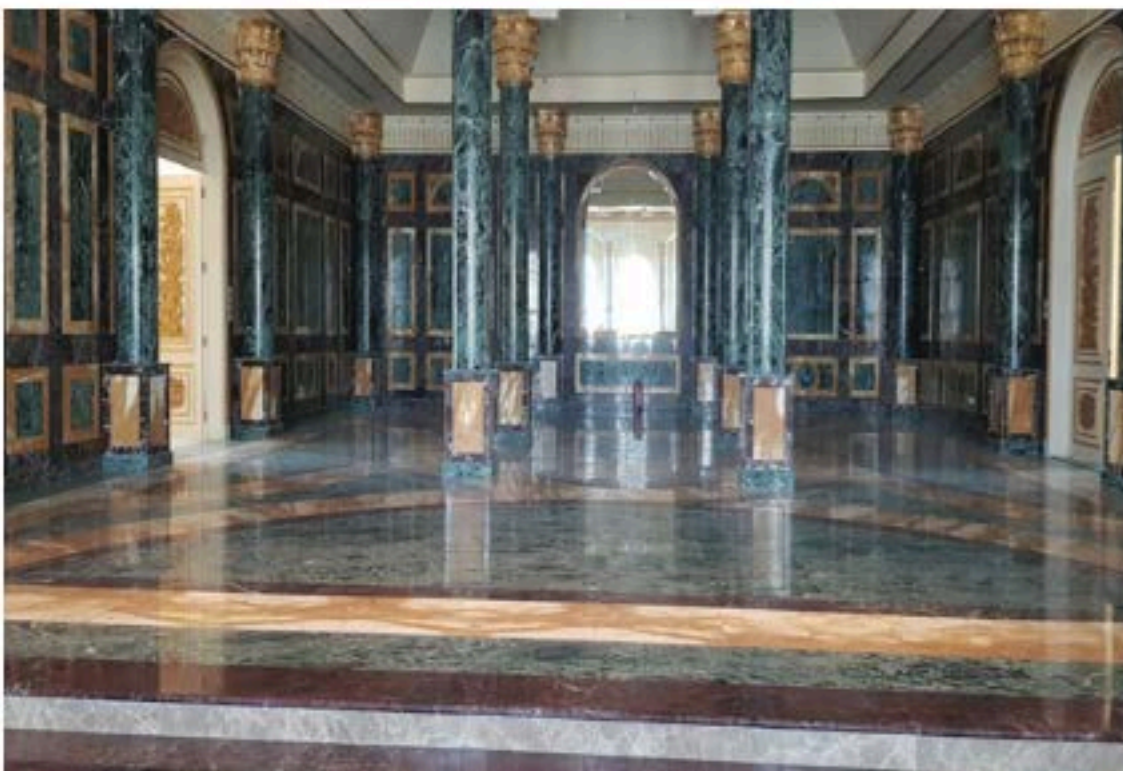
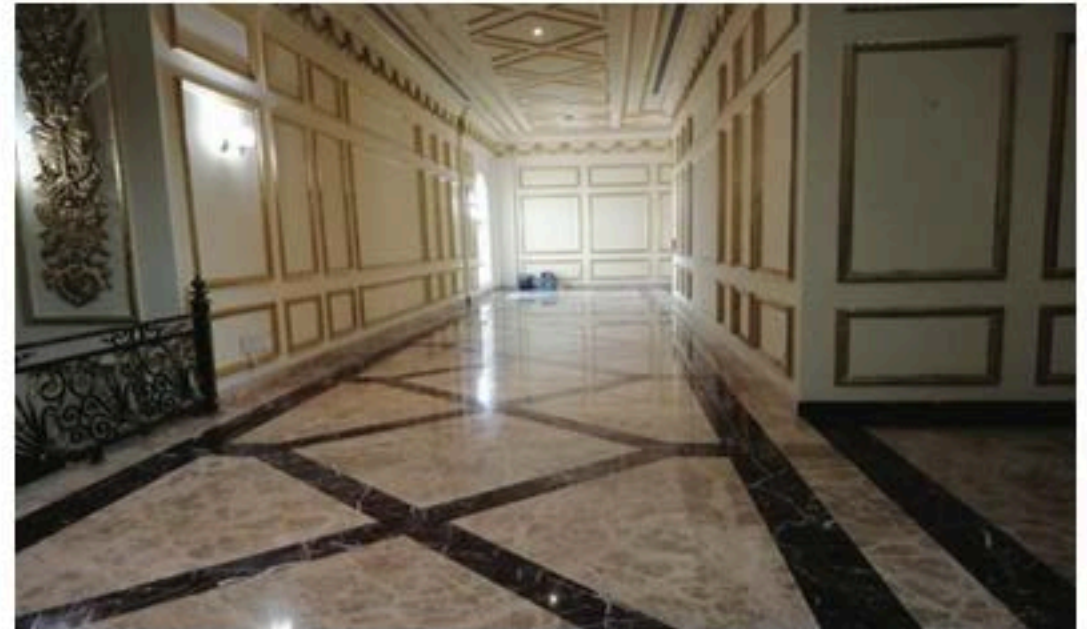
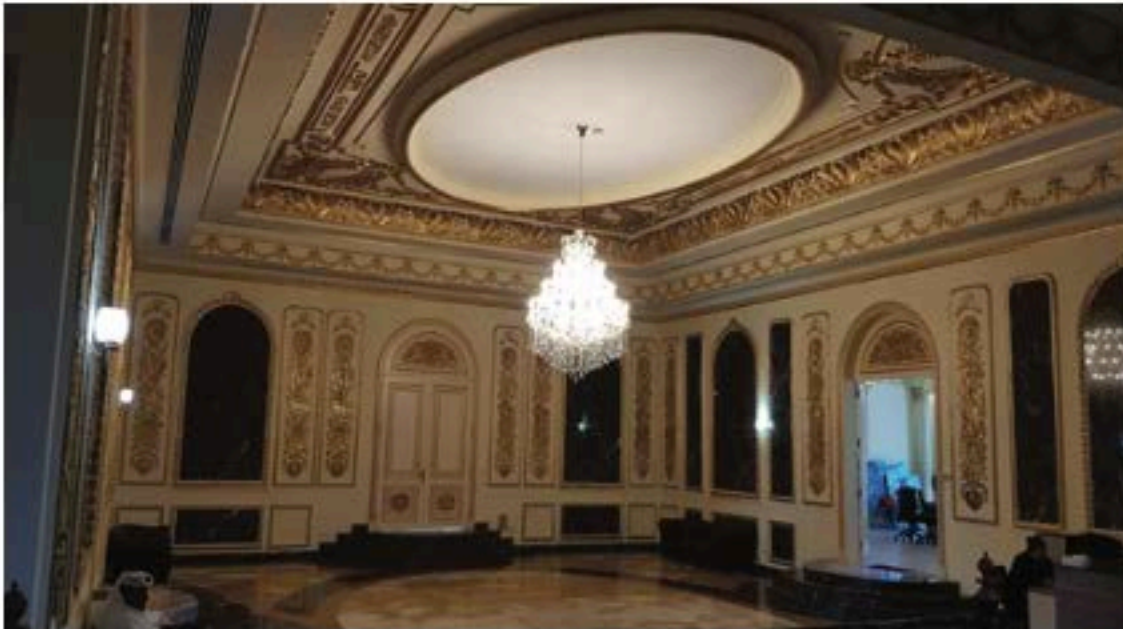
Project :

Fox Hills Residential Building B+G+4 RES A37



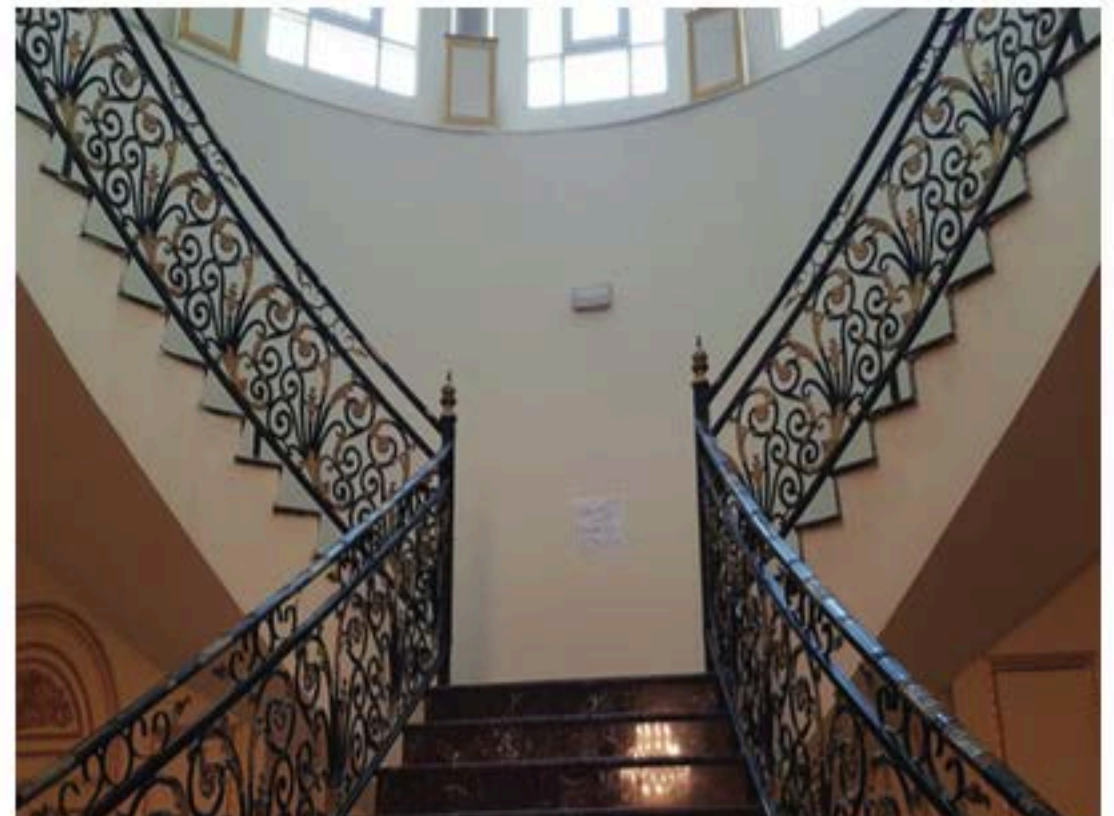
13.2 Completed Projects:

Project : Sheikh khalid palace
Status : Completed
Client / Contractor : Sheikh Khalid Bin Abdullah AL Thanni
Location : Aspire Zone



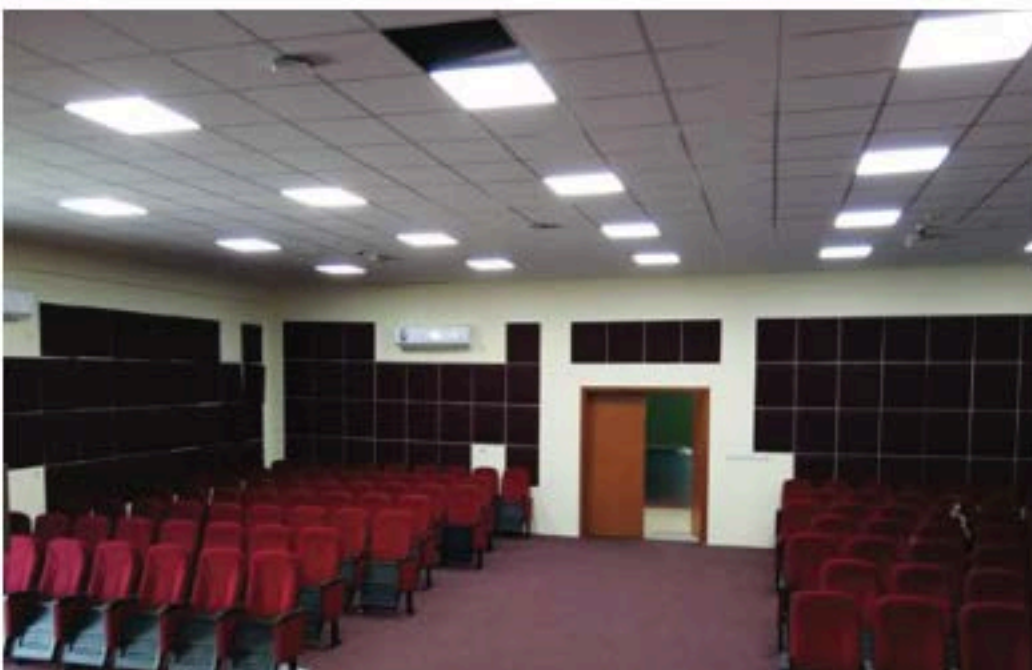
Project :

Sheikh Khalid Palace



13.2 Completed Projects:

Project : Edison Academy -Aspire
Status : Completed
Client / Contractor : Edison Academy
Location : Aspire



13.2 Completed Projects:

Project : Al Hitmi Residential Building
Status : Completed
Client / Contractor : Hitmi Property Development
Location : Bin Omran



13.2 Completed Projects:

Project : Fraser Suites Hotel
Status : Completed
Client / Contractor : Al Hitmi Property Development
Location : Al Corniche



13.2 Completed Projects:

Project : Al Hitmi Office Tower at the Corniche
Status : Completed
Client / Contractor : Al Hitmi Property Development
Location : New AlHitmi



13.2 Completed Projects:

Project : Al Kaabi Villa
Status : Completed
Client / Contractor : Kebcoo
Location : Abu Hamour



13.2 Completed Projects:

Project : Four Season Nusantao
Status : Completed
Client / Contractor : Four Season Hotel
Location : West Bay



13.2 Completed Projects:

Project : Extension at La Cigale hotel
Status : Completed
Client / Contractor : Arabian Construction
Location : Bin Mahmoud



13.2 Completed Projects:

Project : OOREDOO Head Quarter Tower
Status : Completed
Client / Contractor : OOREDOO - Qtel
Location : West Bay



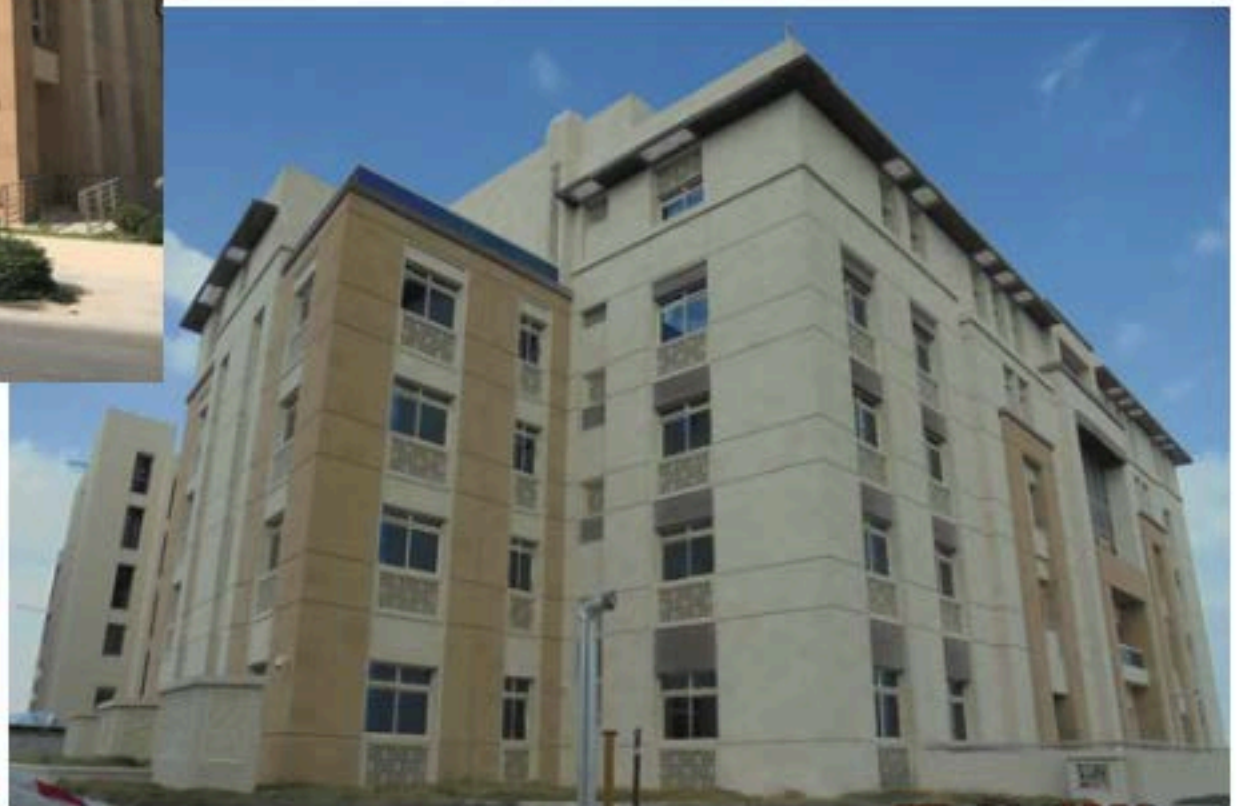
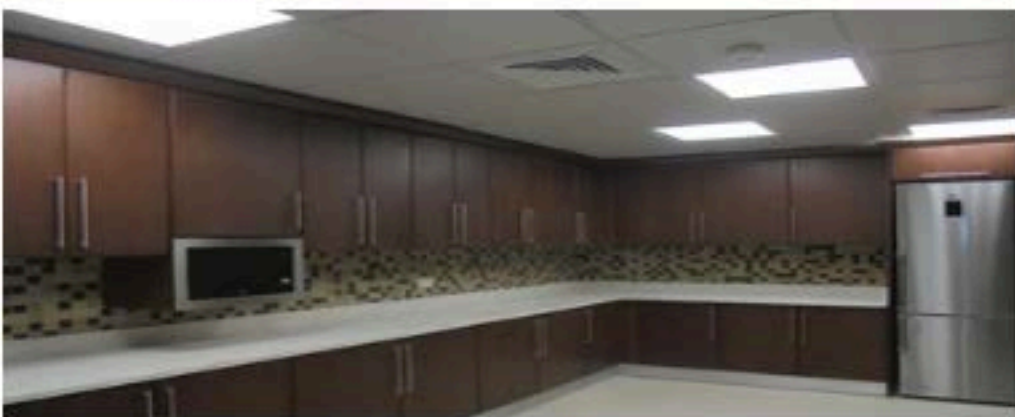
13.2 Completed Projects:

Project : Al Muraihk Villa; Eng. MS DIAB
Status : Completed
Client / Contractor : Private Hospitality Co
Location : Muraihk



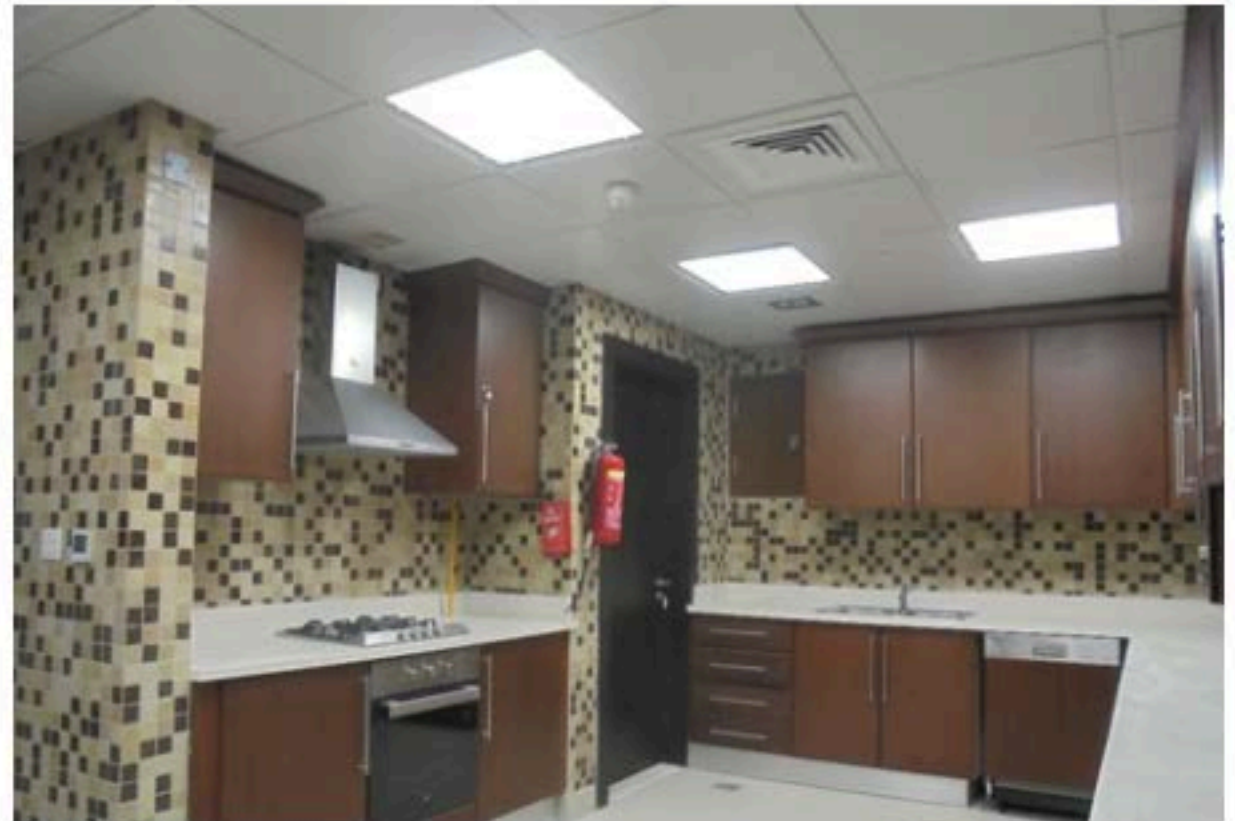
13.2 Completed Projects:

Project : Fox Hills Residential Building B+G+4 RES D17
Status : Completed
Client / Contractor : Hitmi Property Development
Location : Lusail



Project :

Fox Hills Residential Building B+G+4 RES D17



14.0 List of Equipment:

SI	DESCRIPTION	QTY
01	Crane 25 Ton	2
02	Crane 50 Ton	1
03	Shawal	4
04	Excavatoers	4
05	Truck	6
06	Flat Bed	2
07	Truck Crane	1
08	JCB	2
09	Air Compressors	3
10	Skid-Steer Loader (Bodcat)	2
11	Generators 200KVA	3
12	Generators 400KVA	6
13	Tower Lights	10
14	Aerial Sissor Lifts	2
15	Compactors	6
16	Telehandlers	4
17	Vibrator Machine	4

15.0 List of Tools:

SI	DESCRIPTION	QTY
01	HILTI TE-2	24
02	HILTI TE-16	15
03	HILTI TE-30	22
04	HILTI TE-40	15
05	HILTI TE-60 (COMBI HAMMER)	8
06	HILTI TE-70(COMBI HAMMER)	8
07	Steel Bending Machine	4
08	Steel Cutting Machine	4
09	Lifting Machine	3
10	Total Station	3
11	Welding Machine	4
12	Level Machine	5
13	Coring Machine	2
14	Grinding Machine 4.5" (Bosch)	10
15	Grinding Machine 4.5" (Hilti)	25
16	Grinding Machine 7" (Bosch)	15
17	Grinding Machine 9" (Bosch)	10
18	Grinding Machine 9" (Makita)	10
19	Rotary Hammer Drill (Makita)	22

15.0 List of Tools:

SI	DESCRIPTION	QTY
20	26mm H/D SDS Plus Drilling Machine	15
21	(13mm Drilling Machine (Dewalt	35
22	(Drilling Machine (Bosch	20
23	Cordless Drilling Machine	15
24	“Cut Off Machine 14	5
25	(Jig Saw Machine (Bosch	10
26	(Jig Saw Machine (Bosch	10
27	Oxygen Cylinder	5
28	Acetyline Cylinder	3
29	Nitrogen Cylinder	4
30	Cutting Set	15
31	Lever Hoist 1.6 Ton - Electrical	1
32	Lever Hoist 5 Ton - Electrical	1
33	GI Condukt Bending Machine	10
34	(Pressure Testing Pump (Manual	9
35	PPR Welding Machine 16mm to 63 mm	8
36	“Pedestal Fan 24	18
37	0.80x1.60x1.96 Mtr Aluminium Scaffloding	70
38	0.75x1.850x2.2 Mtr Aluminim Scaffloding	82

15.0 List of Tools:

SI	DESCRIPTION	QTY
39	2.45 x 1.35 Mtr Aluminim Scaffolding	65
40	1.65 x 0.70 3.8 Mtr Aluminim Scaffolding	45
41	1.85 x 1.25 x 4 Mtr Aluminim Scaffolding	52
42	1.85 x 1.35 x 4.2 Mtr Aluminim Scaffolding	22
43	1.45 x 2.50 x 6 Mtr Aluminim Scaffolding	14
44	Pallet Jack 3 Ton	3
45	Pallet Jack 2.5 Ton	5
46	Lapton Computer (Dell)	32
47	Lapton Computer (HP)	20
48	Computer (Complete Set)	22
49	Walky-Talky (Motorola)	6
50	Multi-Meter Analogue	15
51	Multi-Meter Digital	10
52	Megger	7
53	Clamp Meter	8
54	Earthing & Testing Equipment Sets	1
55	Cable Pulling Machine 5 Ton	1
56	Cable Traler 9 Ton	2

15.0 List of Tools:

SI	DESCRIPTION	QTY
57	Cable Rollers	65
58	Groove Machines 2 1/2"	4
59	Threading Machine	9
60	Diesel Hydraulic Testing Pump	1
61	Electrical Hydraulic Testing Pump	1

16.0 Accommodation:

Labour Camps

ACCOMMODATION	LOCATION	NUMBER OF
Camp 47	Industrial Area	45
Camp 23	Industrial Area	25
Al Shahaniya	Dukhan Road	15

Each Labour camp is managed by individual camp in charge. All camps are equipped with fire

And safety devices. Janitorial, house keeping is provided in all camps by the company.

HSE

Inspectors carry out routine inspection in the camps every month. Company arranges transport

Facilities to Doha during week ends. Sufficient numbers of washing machines, water coolers,

Refrigerators, cooking utilities and other facilities are provided by the company.

17.0 Staff Employees Job Position:

SI STAFF EMPLOYEES JOB POSITION

01	General Manager
02	Executive Manager
03	Business Development Manager
04	Projects Manager
05	Construction Manager
06	MEP Manager
07	Finance and Admin Manager
08	HR Manager
09	Accountant
10	Technical Manager
11	Sr. Structural Engineer
12	Project Engineer
13	Sr. Electrical Engineer
14	Sr. Mechanical Engineer
15	Architectural Engineer
16	QA/QC Engineer
17	Planning Engineer
18	Quantity Surveyor
19	Document Controller
20	Land Surveyor
21	Procurement Manager
22	Purchasing
23	Draftsman
24	Safety Officer
25	General Foreman
26	Electrical Foreman
27	Mechanical Foreman

18.0 Workers Manpower List:

SI	DESCRIPTION	QTY
01	Store Keeper	2
02	Driver	10
03	Office Boy	2
04	Foreman	6
05	Charge Hand	6
06	Carpenter	21
07	Steel Fixer	32
08	Mason	18
09	Mason Helper	10
10	Helper	35
11	Electrician	11
12	Mechanical Workers	9

19.0 Vehicles & Stores:

Gulf Falcon is owning a good fleet of vehicles :

VEHICLE/MAKE		TYPE	QTY
Nissan	Sunny	Car	4
Nissan		Pick up	3
Nissan	Urvan	Bus	2
TATA	Leyland	Bus	2
Mitsubishi	Canter	Pick up - 3 Ton	2

Maintenance of the vehicles is conducted as per company maintenance schedule.

19.1 Stores:

Gulf Falcon owns the following stores and all of them are equipped with storage Racks, Lifting Devices, Fork Lift, Safety Devices and First Aid Facilities.

01	Camp 47	450 m ²
02	Camp 23	700 m ²
03	Al Shahaniya	1300 m ²

All Stores are linked to the Head office through ERP system and managed by Qualified, Experienced Store Keepers. Hard and soft copies of all store records are maintained.

Store activities are audited twice every year.




Gulf Falcon
Contracting Co. W.L.L.



Gulf Falcon

Contracting Co. W.L.L.



+974 44354017



+974 4435 4562



info@gf-qatar.com



P.O. Box: 14109, Doha - Qatar



www.gf-qatar.com